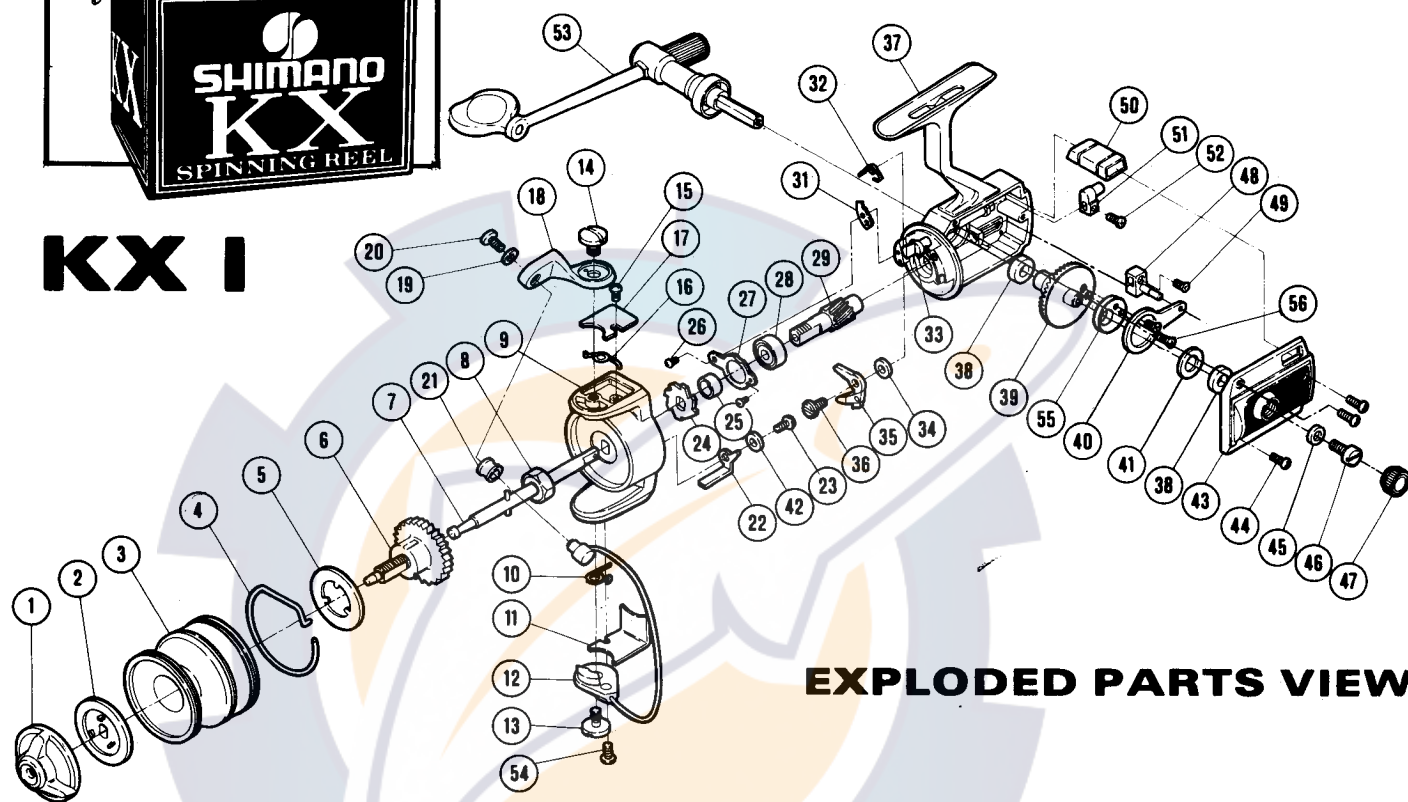


## REPAIR MANUAL KX I

Shimano American Corporation, 205 Jefferson Road  
Parisippany, N.J. 07054



### KX I



### EXPLODED PARTS VIEW

### PARTS LIST

PART #	DESCRIPTION	PRICE	PART #	DESCRIPTION	PRICE	PART #	DESCRIPTION	PRICE
1	Drag Adjusting Knob	1.55	20	Line Guide Screw	.50	39	Drive Gear	10.00
2	Drag Disk	.30	21	Roller Line Guide	1.25	40	Oscillation Guide	.40
3	Spool Shell	13.00	22	Trip Lever	.65	41	Thrust Washer	.15
4	Click Spring	.50	23	Trip Lever Screw	.15	42	Trip Lever Spacer	.15
5	Base Drag Washer	.15	24	Anti Reverse Ratchet	.50	43	Side Plate	5.75
6	Spool Spindle	4.00	25	Anti Reverse Spacer	.25	44	Side Plate Screw	.15
7	Spool Axle	4.15	26	Bearing Lock Screw	.15	45	Handle Screw Lock Washer	.20
8	Rotor Nut	.25	27	Bearing Lock	.15	46	Handle Retainer Screw	.40
9	Rotor	6.40	28	Ball Bearing	5.00	47	Dust Cap	.35
10	Trip Lever Spring	.25	29	Pinion Gear	4.25	48	Oscillation Block	.65
11	Trip Lever Cover	.25	31	Trip Cam	.30	49	Oscillation Block Screw	.15
12	Bail Wire	2.50	32	Anti Reverse Shaft Spring	.25	50	Anti Reverse Switch	1.00
13	Bail Wire Screw	1.50	33	Anti Reverse Shaft	.75	51	Anti Reverse Actuator	.65
14	Bail Mount Screw	.50	34	Anti Reverse Dog Spacer	.15	52	Actuator Screw	.15
15	Bail Spring Cover Screw	.15	35	Anti Reverse Dog	.50	53	Handle	6.00
16	Bail Spring	.25	36	Anti Reverse Dog Screw	.35	54	Trip Lever Cover Screw	.15
17	Bail Spring Cover	.20	37	Housing	11.00	55	Oscillation Disk	.25
18	Bail Mount	1.75	38	Drive Gear Bushing	.50	56	Oscillation Disk Screw	.15
19	Line Guide Lock Washer	.15						

Prices and specifications subject to change without notice.